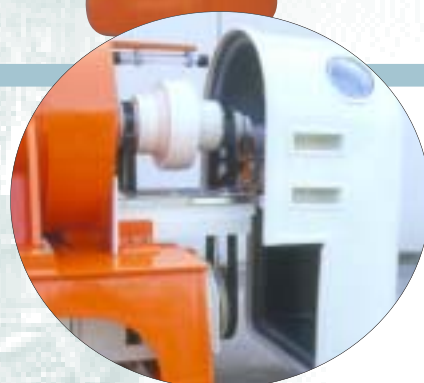


CENTRIFUGAL EXTRACTORS

"HERCULES" SERIES



GRUPPO

PIERALISI

CENTRIFUGAL EXTRACTORS "HERCULES" SERIES

Our "Hercules" series centrifugal extractors are equipped with:

- Patented sludge scraper for continuous discharge of dewatered sludge from the solids discharge chamber
- Special wear-proof protection on peripheral screw area
- Electronic safety device for overload protection, with optional visual or acoustic alarm signals
- Hard-metal protection bushes on solids discharge holes
- Electronic revolution counter, as standard equipment



Electronic control boxes for centralised lubrication of bowl bearings and sludge scraper.

ALL PARTS IN CONTACT WITH PRODUCT IN STAINLESS STEEL

PARTICULAR FEATURES

- **New ARD SYSTEM**, giving a dewatered product with a much more solid content.
- New suspension system that removes all vibrations during operations.

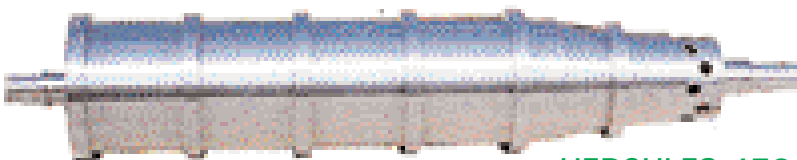
- New-generation casing to protect moving inside parts, with illuminated inspection panel.
- Gradual start-up for greater energy savings.
- Centralised lubrication with greases and oils for use with foodstuffs.
- Safety device for vibration control.



HERCULES 470/2

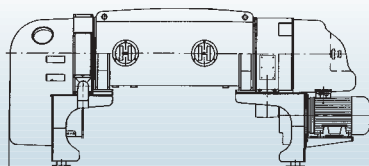


HERCULES 470/3

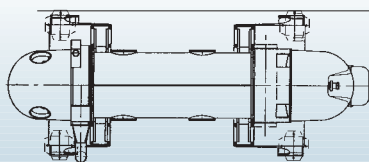


HERCULES 470/4

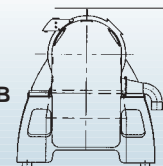
Models	Main motor power kW	Drum revolution max rpm	Centrifugal force max x g	Slenderness ratio L/D	Drum diameter mm	Hydraulic capacity l/h
HERCULES 470/2	45	3,350	2,950	3.38	470	35,000
HERCULES 470/3	52	3,350	2,950	4.25	470	45,000
HERCULES 470/4	52	3,350	2,950	5.12	470	55,000



A



B



C

Models	Total length A mm	Total width B mm	Total height C mm
470/2	3,380	1,635	1,720
470/3	3,920	1,635	1,720
470/4	4,330	1,635	1,720

The company reserves the right to modify the machines for improvements at any time.

GRUPPO
PIERALISI

Via Don Battistoni, 1 - 60035 JESI (AN) - Italy - Tel. +39-0731-231.1 - Fax +39-0731-231.239
www.pieralisi.com - info@pieralisi.com